



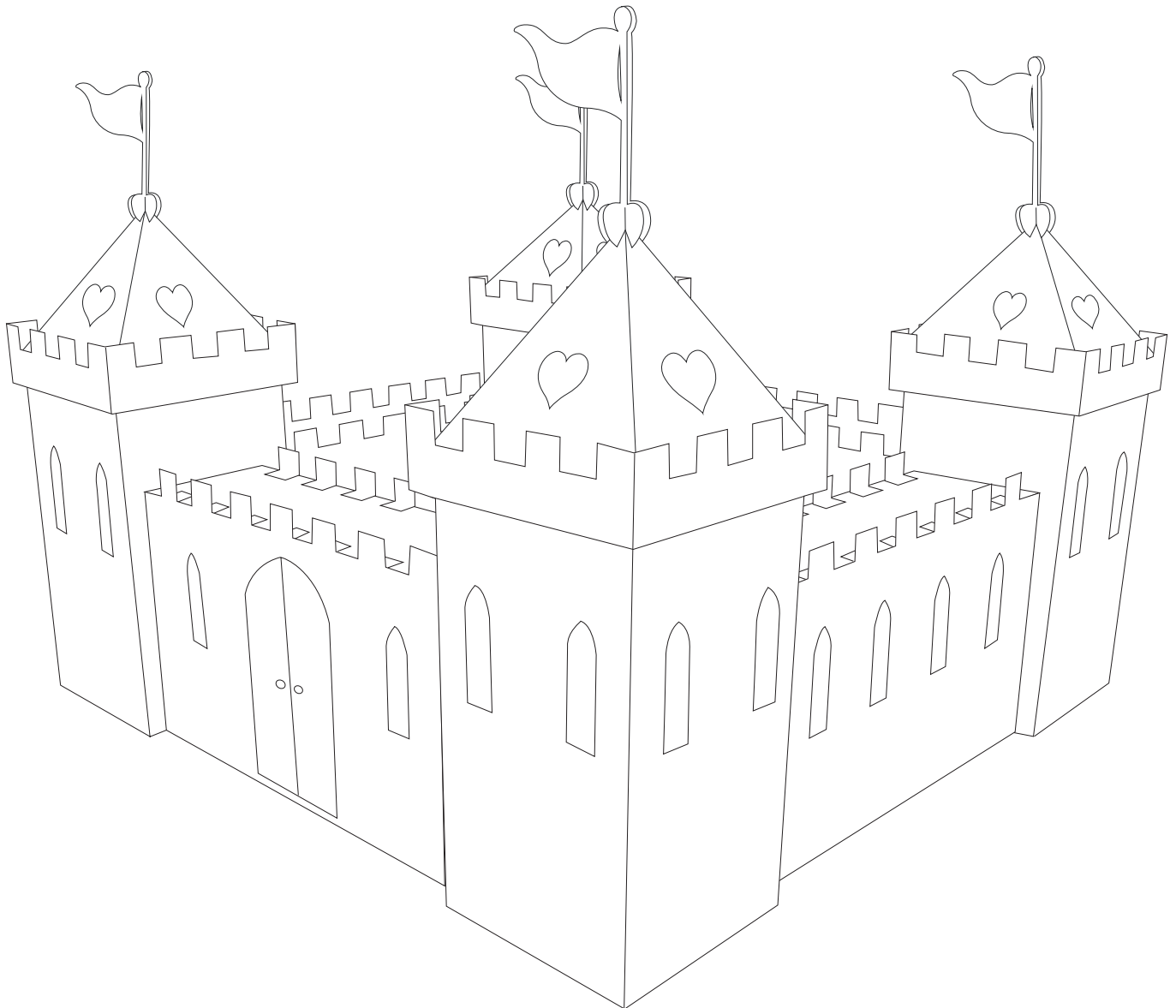
Toys that won't cost us the earth

Large Princess Palace Assembly Instructions

(Registered Design 4002675) Please retain this document for future reference.

Please fold all creases well prior to assembly of toy and ensure all parts are securely connected.

Assembled Large Princess Palace



The large princess palace is designed primarily for indoor use but is also suitable for outdoor use in dry, calm conditions. The large princess palace should be stored in a dry place and should be kept away from fire or any naked flame. The large princess palace should be inspected regularly before, during and after use for any signs of damage, which could cause potential injury.

WARNING : This product should be kept out of the reach of very young children and only be used under the direct supervision of an adult.

www.cardboardtoys.com

Postpack Ltd T/A Kid-Eco

Units 1,2 & 4, Hollis Road, Grantham, Lincs. NG31 7QH

tel: 0845 071 0761 | fax: 0845 071 0766 | email: sales@kideco.co.uk

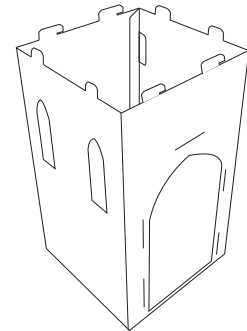
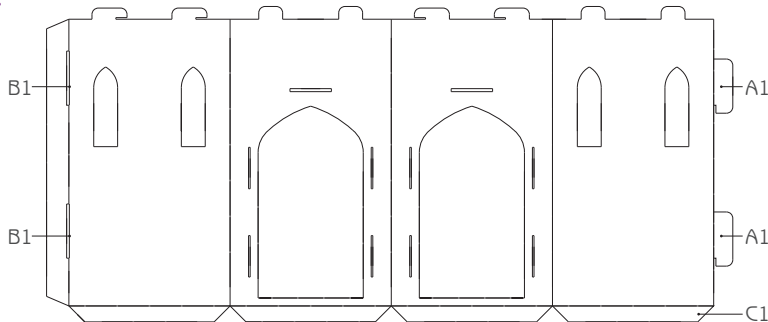


Large Princess Palace Assembly Instructions

(Registered Design 4002675) Please retain this document for future reference.

Please fold all creases well prior to assembly of toy and ensure all parts are securely connected.

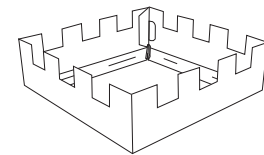
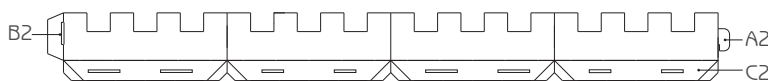
Step 1



Turret Base
(4 off)

- Insert tabs (A1) into slots (B1) at opposite end of turret base and gently pull down to lock into place.
- Fold flaps (C1) inwards for stability.

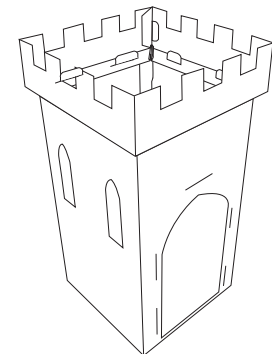
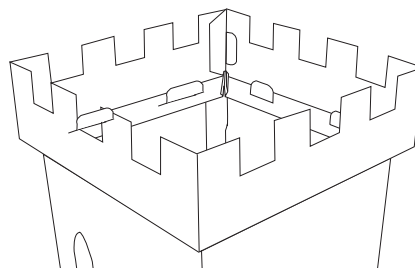
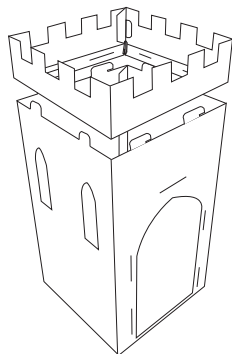
Step 2



Turret Top
(4 off)

- Insert tab (A2) into slot (B2) at opposite end of turret top and gently pull down to lock into place.
- Fold flaps (C2) under, ensuring corner tabs are on the inside.

Step 3



Assembled
Turret

- Align the larger slots in the turret top with the larger tabs on the turret base and the smaller slots with the smaller tabs.
- Gently push down until turret top is firmly attached to base. The turret is now complete.
- Repeat for all 4 turrets.

The large princess palace is designed primarily for indoor use but is also suitable for outdoor use in dry, calm conditions. The large princess palace should be stored in a dry place and should be kept away from fire or any naked flame. The large princess palace should be inspected regularly before, during and after use for any signs of damage, which could cause potential injury.

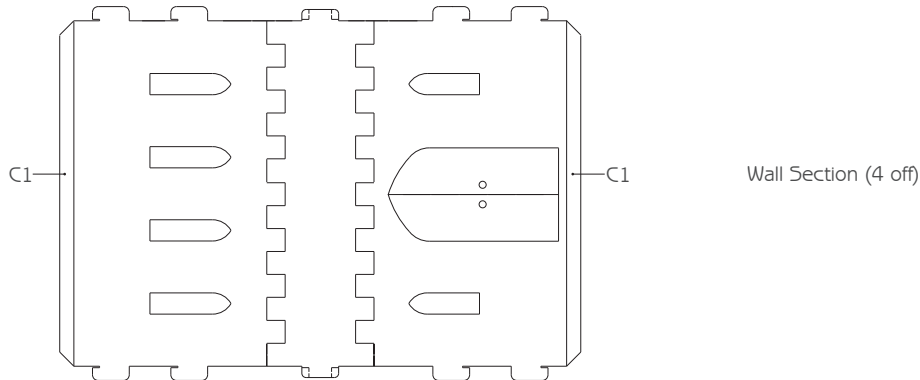
WARNING : This product should be kept out of the reach of very young children and only be used under the direct supervision of an adult.

Large Princess Palace Assembly Instructions

(Registered Design 4002675) Please retain this document for future reference.

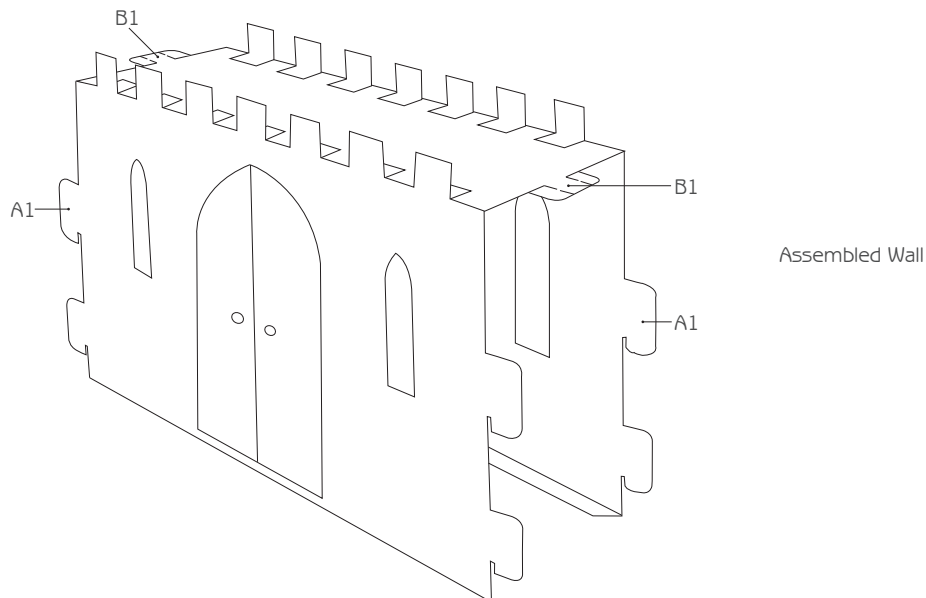
Please fold all creases well prior to assembly of toy and ensure all parts are securely connected.

Step 4



- Fold flaps (C1) inwards for stability.

Step 5



The large princess palace is designed primarily for indoor use but is also suitable for outdoor use in dry, calm conditions. The large princess palace should be stored in a dry place and should be kept away from fire or any naked flame. The large princess palace should be inspected regularly before, during and after use for any signs of damage, which could cause potential injury.

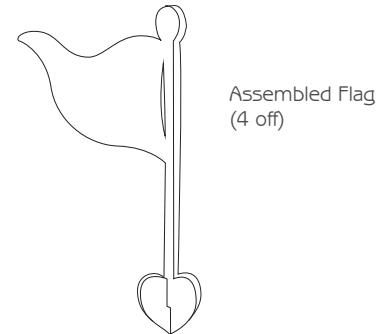
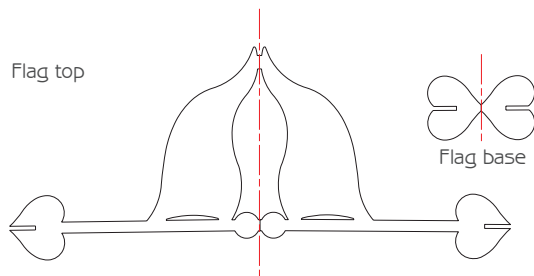
WARNING : This product should be kept out of the reach of very young children and only be used under the direct supervision of an adult.

Large Princess Palace Assembly Instructions

(Registered Design 4002675) Please retain this document for future reference.

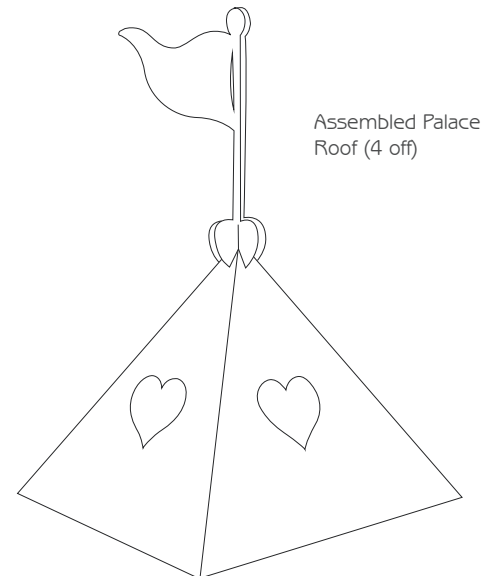
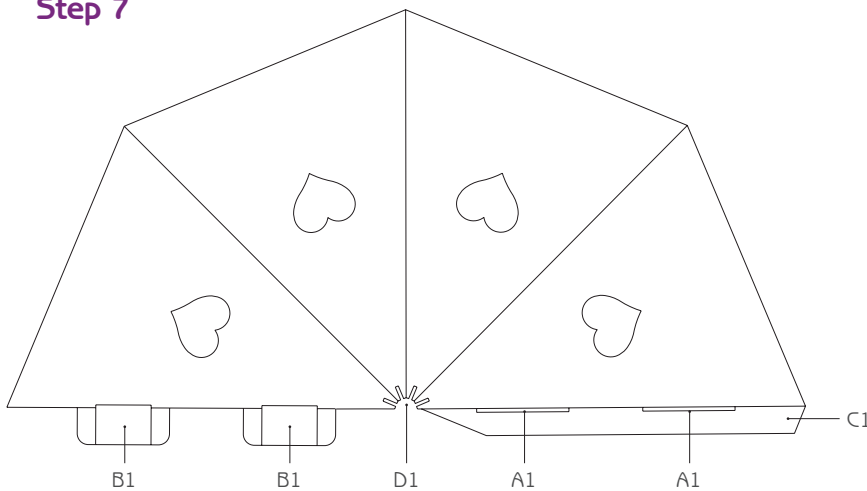
Please fold all creases well prior to assembly of toy and ensure all parts are securely connected.

Step 6



- Fold flag top and flag base in half. (Care should be taken as it is fragile until assembled)
- Align the slots on the flag top with the slots on the flag base and gently push down until flag top is firmly attached to flag base. The flag is now complete.

Step 7



- Fold flap (C1) inwards for stability.
- Insert tabs (B1) into adjacent slots (A1) on palace roof and gently pull down to lock into place.
- Insert assembled flag into slot (D1) on assembled palace roof.
- Repeat for all 4 palace roofs.

The large princess palace is designed primarily for indoor use but is also suitable for outdoor use in dry, calm conditions. The large princess palace should be stored in a dry place and should be kept away from fire or any naked flame. The large princess palace should be inspected regularly before, during and after use for any signs of damage, which could cause potential injury.

WARNING : This product should be kept out of the reach of very young children and only be used under the direct supervision of an adult.