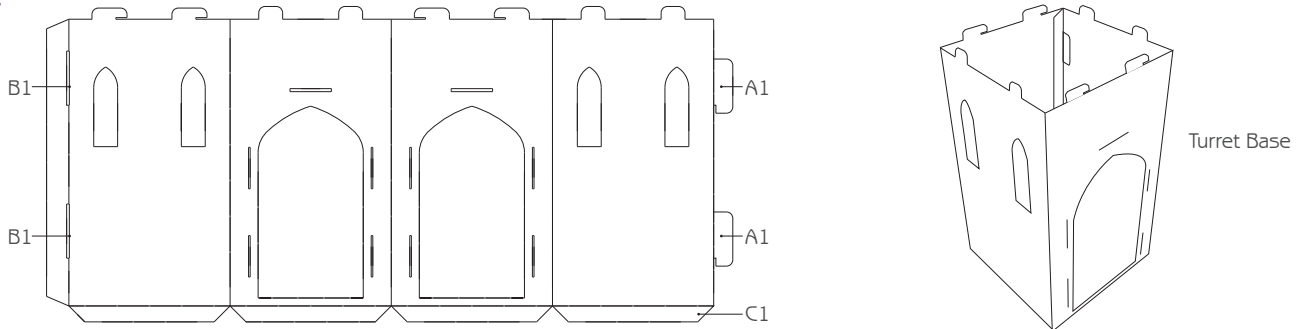


## Turret Assembly Instructions

(Registered Design 4002675) Please retain this document for future reference.

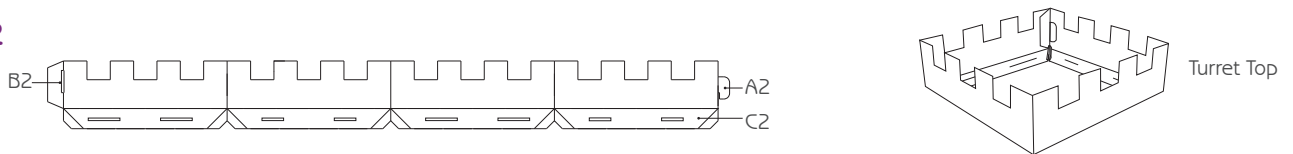
Please fold all creases well prior to assembly of toy and ensure all parts are securely connected.

### Step 1



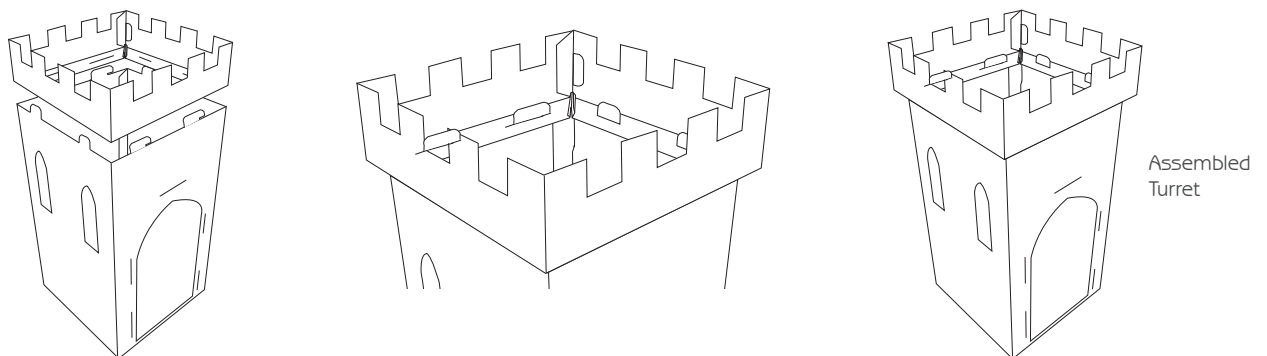
- Insert tabs (A1) into slots (B1) at opposite end of turret base and gently pull down to lock into place.
- Fold flaps (C1) inwards for stability.

### Step 2



- Insert tab (A2) into slot (B2) at opposite end of turret top and gently pull down to lock into place.
- Fold flaps (C2) under, ensuring corner tabs are on the inside.

### Step 3



- Align the larger slots in the turret top with the larger tabs on the turret base and the smaller slots with the smaller tabs.
- Gently push down until turret top is firmly attached to base. The turret is now complete.

The turret is designed primarily for indoor use but is also suitable for outdoor use in dry, calm conditions. The turret should be stored in a dry place and should be kept away from fire or any naked flame. The turret should be inspected regularly before, during and after use for any signs of damage, which could cause potential injury.

**WARNING :** This product should be kept out of the reach of very young children and only be used under the direct supervision of an adult.